

# Thermoflex<sup>®</sup>

## STRONG AS STEEL – AND MORE DURABLE

Thermoflex<sup>®</sup> pipe is a spoolable, reliable solution for hydrocarbons, refined fuels and chemicals, delivering the greatest strength-to-weight ratio, chemical compatibility and paraffin build-up resistance in reinforced thermoplastic pipes. The proprietary five-layer construction of Thermoflex pipe goes beyond conventional pipe options, standing up to high pressure and extreme corrosive environments.

## Thermoflex<sup>®</sup> Plus

### High H<sub>2</sub>S, Corrosive and Bacterial Environments

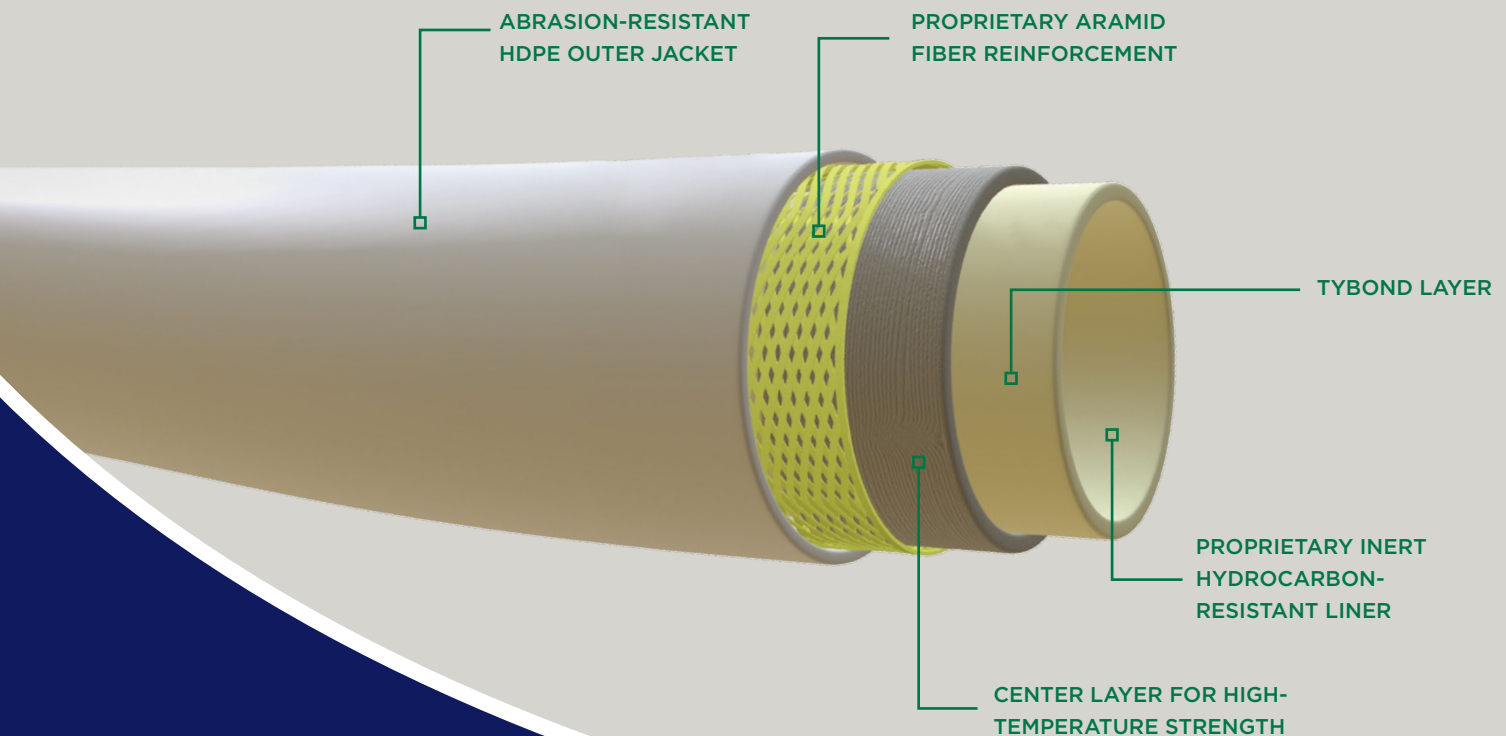
With an inner Polyphenylene Sulfide (PPS) layer, Thermoflex Plus resists harsh chemicals and is a superior choice for extremely corrosive environments.

## Thermoflex<sup>®</sup> ECO

### For Ecofriendly Applications, High Performance and Competitive Price

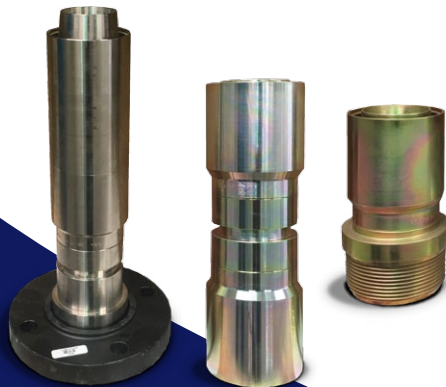
Combining HDPE with reinforced Aramid fiber, Thermoflex ECO is ideal for fresh water, produced water and disposal lines, including oil and gas flowlines.

## Five Layers of Reinforcement



PRODUCT	Outside Diameter (in.)	Internal Diameter (in.)	Max. Pressure (PSI)							Minimum Bend Radius (ft.)	Reel Size (ft.)	Max Reel Weight (lbs.)
<b>THERMOFLEX ECO</b>	<b>An HDPE Liner makes Thermoflex ECO and excellent choice for water transport and salt water disposal.</b>											
Thermoflex ECO® 2.375	2.35	1.90	<b>MAOP</b>	<b>275</b>	<b>500</b>	<b>750</b>	<b>1,000</b>	<b>1,500</b>	<b>2,000</b>	3.92	10.3	3,726
			length/reel	6,600	6,600	6,250	6,600	6,600	5,100			
Thermoflex ECO® 3.0	3.05	2.52	<b>MAOP</b>	<b>275</b>	<b>500</b>	<b>750</b>	<b>1,000</b>	<b>1,500</b>		5.08	12	5,968
			length/reel	3,300	3,600	2,600	2,600	2,500				
Thermoflex ECO® 3.5	3.50	2.89	<b>MAOP</b>	<b>275</b>	<b>500</b>	<b>750</b>	<b>1,000</b>	<b>1,500</b>		5.83	12	6,279
			length/reel	3,900	3,700	3,750	3,900	3,900				
Thermoflex ECO® 4.0	4.04	3.36	<b>MAOP</b>	<b>275</b>	<b>500</b>	<b>750</b>	<b>1,000</b>	<b>1,500</b>		6.73	12	4,217
			length/reel	2,900	2,140	2,850	2,300	1,850				
Thermoflex ECO® 4.5	4.55	3.81	<b>MAOP</b>	<b>275</b>	<b>500</b>	<b>750</b>	<b>1,000</b>			7.58	12	4,402
			length/reel	2,100	1,700	2,100	1,600					
Thermoflex ECO® 5.0	5.12	4.25	<b>MAOP</b>	<b>275</b>	<b>500</b>	<b>750</b>	<b>1,000</b>			8.53	14.5	4,882
			length/reel	1,300	1,350	950	1,400					
Thermoflex ECO® 6.0	6.06	5.03	<b>MAOP</b>	<b>275</b>	<b>500</b>	<b>750</b>				10.1	14.5	3,304
			length/reel	900	940	600						
<b>THERMOFLEX</b>	<b>A nylon PA6/P12 polyphenylene liner makes Thermoflex pipe the ideal choice for a broad spectrum of applications.</b>											
Thermoflex 2.375	2.35	1.90	<b>MAOP</b>	<b>275</b>	<b>500</b>	<b>750</b>	<b>1,000</b>	<b>1,500</b>	<b>2,000</b>	3.92	10.3	3,726
			length/reel	6,600	6,600	6,250	6,600	6,600	5,100			
Thermoflex® 3.0	3.05	2.52	<b>MAOP</b>	<b>275</b>	<b>500</b>	<b>750</b>	<b>1,000</b>	<b>1,500</b>		5.08	12	5,968
			length/reel	3,300	3,600	2,600	2,600	2,500				
Thermoflex® 3.5	3.50	2.89	<b>MAOP</b>	<b>275</b>	<b>500</b>	<b>750</b>	<b>1,000</b>	<b>1,500</b>		5.83	12	6,279
			length/reel	3,900	3,700	3,750	3,900	3,900				
Thermoflex® 4.0	4.04	3.36	<b>MAOP</b>	<b>275</b>	<b>500</b>	<b>750</b>	<b>1,000</b>	<b>1,500</b>		6.73	12	4,217
			length/reel	2,900	2,140	2,850	2,300	1,850				
Thermoflex® 4.5	4.55	3.81	<b>MAOP</b>	<b>275</b>	<b>500</b>	<b>750</b>	<b>1,000</b>			7.58	12	4,402
			length/reel	2,100	1,700	2,100	1,600					
Thermoflex® 5.0	5.12	4.25	<b>MAOP</b>	<b>275</b>	<b>500</b>	<b>750</b>	<b>1,000</b>			8.53	14.5	4,882
			length/reel	1,300	1,350	950	1,400					
Thermoflex® 6.0	6.06	5.03	<b>MAOP</b>	<b>275</b>	<b>500</b>	<b>750</b>				10.1	14.5	3,304
			length/reel	900	940	600						
<b>THERMOFLEX PLUS</b>	<b>A polyphenylene sulfide (PPS) liner makes Thermoflex Plus pipe ideal for transporting sour gas and for use in highly corrosive environments.</b>											
Thermoflex 2.375	2.35	1.90	<b>MAOP</b>	<b>275</b>	<b>500</b>	<b>750</b>	<b>1,000</b>	<b>1,500</b>	<b>2,000</b>	3.92	10.3	3,726
			length/reel	6,600	6,600	6,250	6,600	6,600	5,100			
Thermoflex® 3.0	3.05	2.52	<b>MAOP</b>	<b>275</b>	<b>500</b>	<b>750</b>	<b>1,000</b>	<b>1,500</b>		5.08	12	5,968
			length/reel	3,300	3,600	2,600	2,600	2,500				
Thermoflex® 3.5	3.50	2.89	<b>MAOP</b>	<b>275</b>	<b>500</b>	<b>750</b>	<b>1,000</b>	<b>1,500</b>		5.83	12	6,279
			length/reel	3,900	3,700	3,750	3,900	3,900				
Thermoflex® 4.0	4.04	3.36	<b>MAOP</b>	<b>275</b>	<b>500</b>	<b>750</b>	<b>1,000</b>	<b>1,500</b>		6.73	12	4,217
			length/reel	2,900	2,140	2,850	2,300	1,850				
Thermoflex® 4.5	4.55	3.81	<b>MAOP</b>	<b>275</b>	<b>500</b>	<b>750</b>	<b>1,000</b>			7.58	12	4,402
			length/reel	2,100	1,700	2,100	1,600					
Thermoflex® 5.0	5.12	4.25	<b>MAOP</b>	<b>275</b>	<b>500</b>	<b>750</b>	<b>1,000</b>			8.53	14.5	4,882
			length/reel	1,300	1,350	950	1,400					
Thermoflex® 6.0	6.06	5.03	<b>MAOP</b>	<b>275</b>	<b>500</b>	<b>750</b>				10.1	14.5	3,304
			length/reel	900	940	600						

All products offered in 150°F or RT (raised temp 180°F)



## Thermoflex Couplings & Fittings

- No welding required or makeup needed for flanges or thread joints
- Coupling options include NPT or BSPT threads, weld end, and API 6A/ASME B16.5 flange—all can mate with standard or custom pipe sizes
- Termination fittings connect to common oilfield infrastructure
- Available in carbon steel, 316 stainless steel, 2205 duplex stainless steel or Polyphenylene Sulfide (PPS) coated

Contact us at (432) 686-2001 or [sales@polyflowglobal.com](mailto:sales@polyflowglobal.com)