

Thermoflex[®]ECO

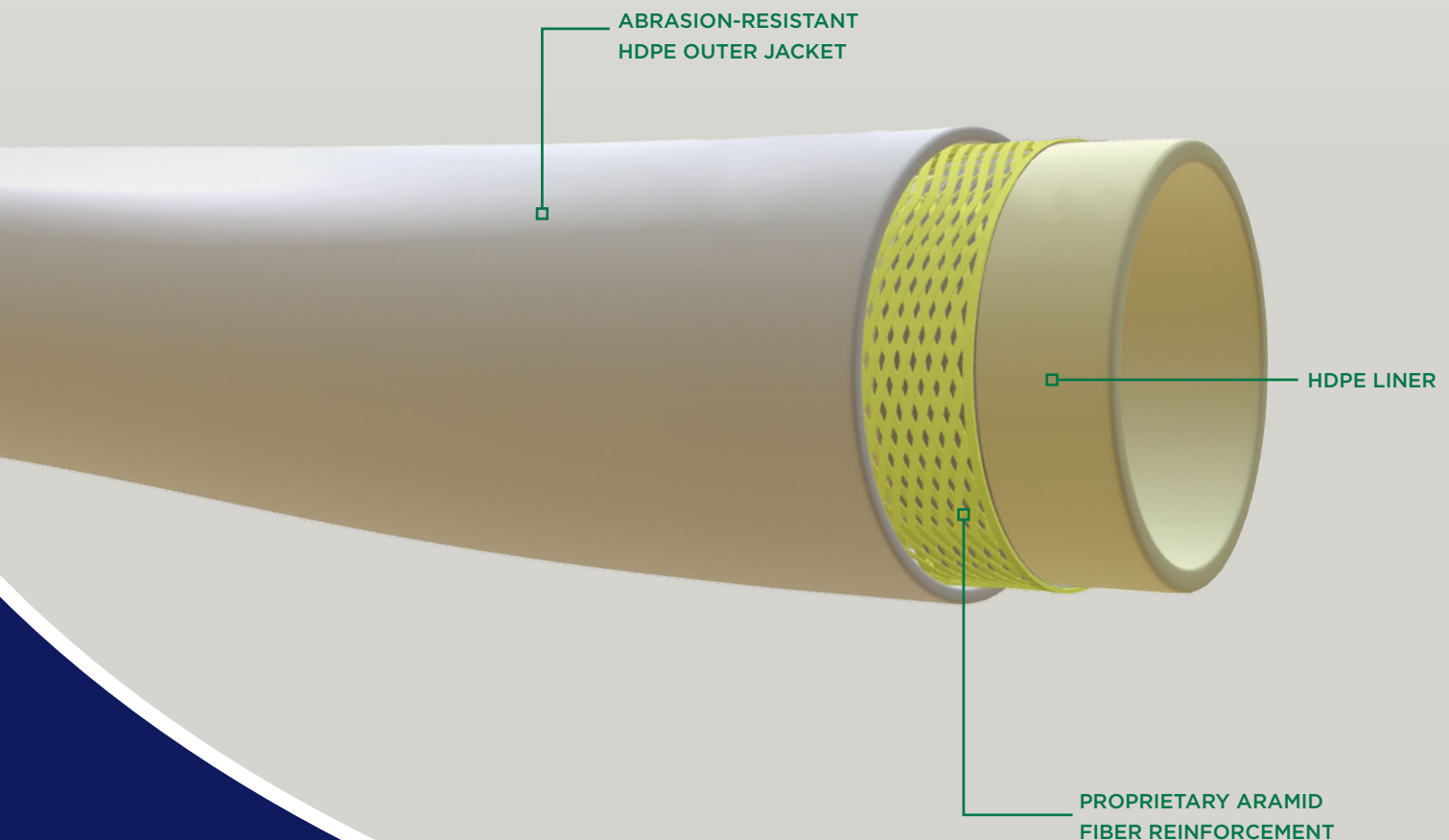
For Ecofriendly Applications - Delivering High Performance at a Competitive Price

Combining a high-density polyethylene (HDPE) liner with reinforced Aramid fiber, Thermoflex ECO is ideal for fresh water, produced water and disposal lines, including oil and gas flowlines. Thermoflex ECO is designed to accommodate pressures up to 2,000 psi.

High temperatures? No problem.

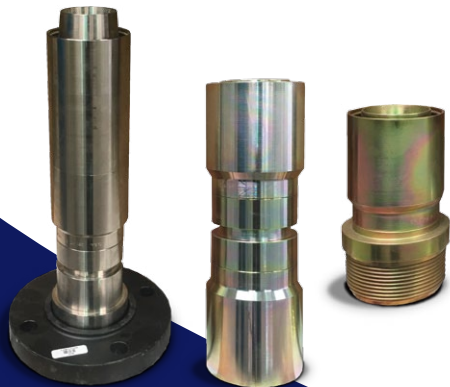
Thermoflex ECO is available in a Raised Temperature (RT) variant. PE-RT material, combined with a Nylon PA12 liner expands the temperature operating range up to 180° F.

Three Layers of Reinforcement



PRODUCT	Outside Diameter (in.)	Internal Diameter (in.)	Liner	Max. Pressure (psi)	Max Temp. (°F)	Minimum Bend Radius (ft.)	Weight (lbs./ft.)	Reel Size (ft.)	Minimum Length per Reel (ft.)	Loaded Reel Weight (lbs.)
THERMOFLEX® ECO PIPE	A high density polyethylene (HDPE) liner makes Thermoflex ECO pipe ideal for transporting fresh and produced water, along with oil and gas flowlines.									
Thermoflex® ECO 2.375	2.35	1.90	HDPE/PE-RT	2,000	150°F/180°F	3.92	0.69	10.3	5,100	3,834
Thermoflex® ECO 3.0	3.05	2.52	HDPE/PE-RT	1,800	150°F/180°F	5.08	1.07	10.3	4,800	6,121
Thermoflex® ECO 3.5	3.50	2.89	HDPE/PE-RT	1,500	150°F/180°F	5.83	1.39	10.3	3,900	6,438
Thermoflex® ECO 4.0	4.04	3.36	HDPE/PE-RT	1,500	150°F/180°F	6.73	1.79	12	1,850	4,314
Thermoflex® ECO 4.5	4.55	3.81	HDPE/PE-RT	1,000	150°F/180°F	7.58	2.2	12	1,600	4,517
Thermoflex® ECO 5.0	5.12	4.25	HDPE/PE-RT	1,000	150°F/180°F	8.53	2.84	14.5	1,400	4,976
Thermoflex® ECO 6.0	6.06	5.03	HDPE/PE-RT	750	150°F/180°F	10.1	3.92	14.5	600	3,352

All products offered in 150°F or RT (raised temp 180°F)



Thermoflex Couplings & Fittings

- No welding required or makeup needed for flanges or thread joints
- Coupling options include NPT or BSPT threads, weld end, and API 6A/ASME B16.5 flange—all can mate with standard or custom pipe sizes
- Termination fittings connect to common oilfield infrastructure
- Available in carbon steel, 316 stainless steel, 2205 duplex stainless steel or Polyphenylene Sulfide (PPS) coated

Contact us at (432) 686-2001 or sales@thermoflexpipe.com